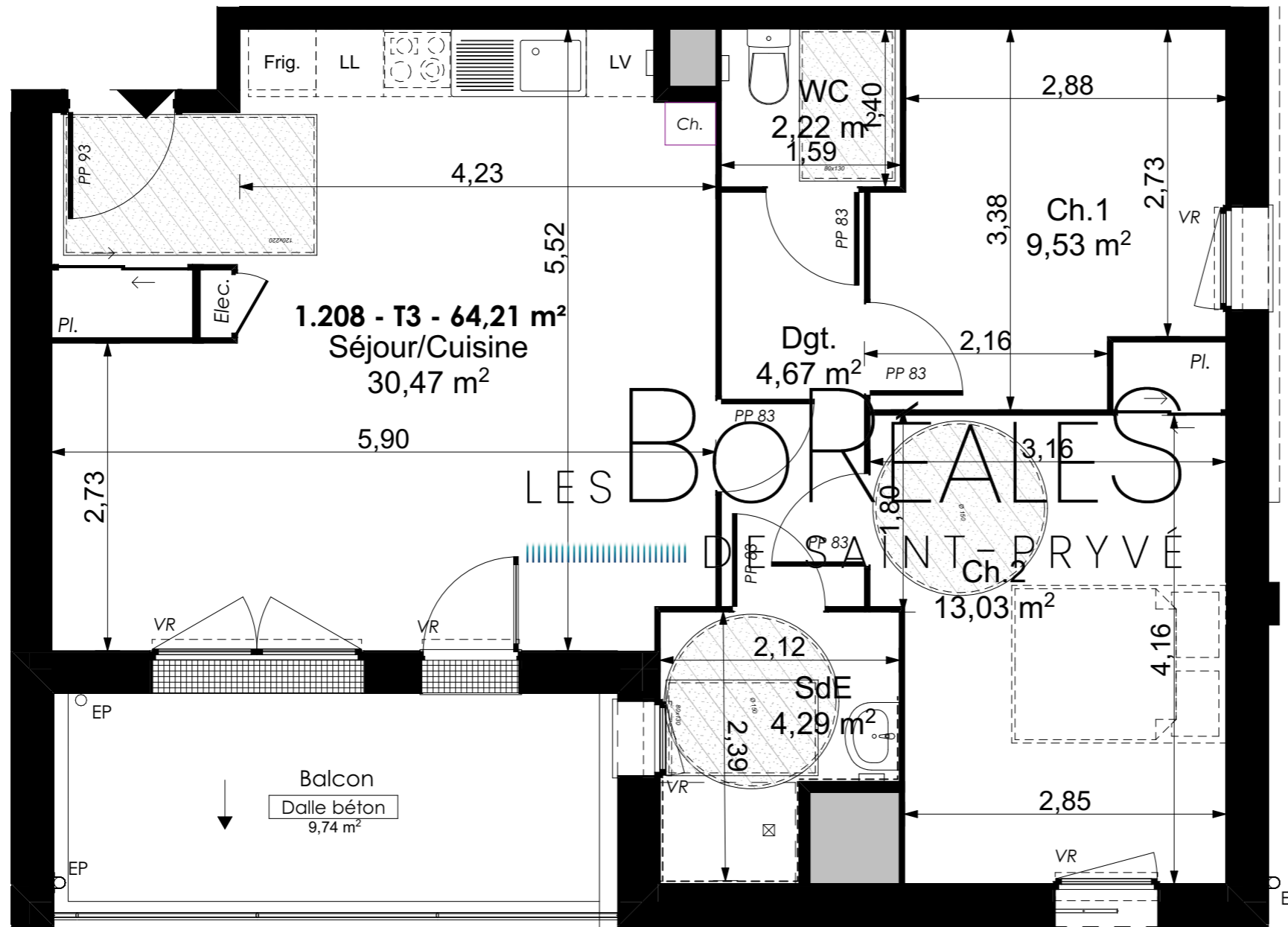
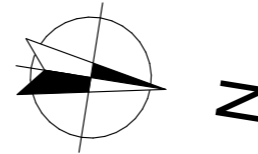


LES BORÉALES

DE SAINT-PRYVÉ



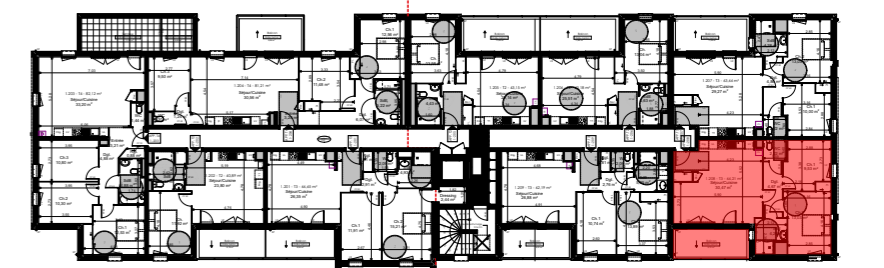
Valloire Habitat

Groupe ActionLogement

28 bis rue du Gros Raisin
45750 SAINT-PRYVE-SAINT-MESMIN

Les BoRéales de Saint-Pryvé

TYPE T3 - LOGEMENT 1-208 R+2		
Séjour/Cuisine		30,47 m ²
Dgt		4,67 m ²
WC		2,22 m ²
SdB		4,29 m ²
Ch. 1		9,53 m ²
Ch. 2		13,03 m ²
Total surfaces habitables		64,21 m ²
Annexes		Surf. Utile
Balcon		9,74 m ²
Total surfaces Annexes		9,74 m ²
TOTAL SURFACES		73,95 m ²



15/11/2022

Indice C

Ech : 1:50

